

WASHSTATION

Key Features & Information

Applications: 

About

This portable, plug and play WashStation unit has been specifically designed for outdoor or indoor use on construction sites; commercial premises; factories; fuel stations; golf and sports clubs; farmyards; marts; community centres; creches; schools and many other locations and applications.

The WashStation can be configured for gravity to drain or pump to drain options. There is also a cold water only or heated option available. Multiple cold WashStations can be connected together for use on sites at a 2m distance in accordance with social distancing guidelines.

Please note, water pressure to tap will vary depending on whether you have a gravity supply (low pressure) or a pressurised supply. To increase the incoming pressure, simply add a Multiboost boosting system, for more, go to Multiboost.ie.



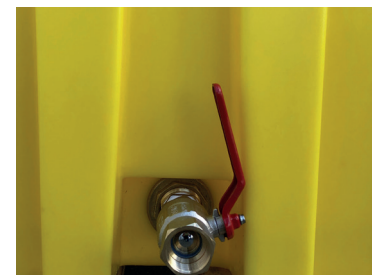
Combined WashStation & HeatStation Unit

Key Features

- › Non-corrosive, durable holding tank
- › Tank drain-off fitting
- › Elbow push tap
- › Adjustable temperature settings (Thermostatic valve)
- › Mains water feed
- › Euro pallet mounted option
- › Pump version available (if required to pump to drain)
- › Easy assembly (plug and play)



Paper & Soap Dispenser



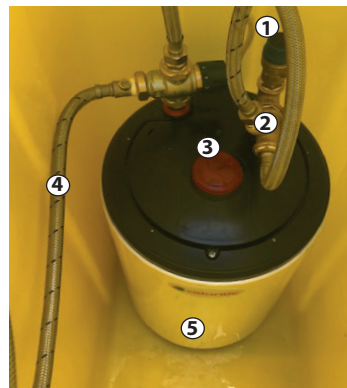
Drain Off Valve

Range Options

Product Code	
1092882	WashStation c/w push tap (gravity to drain)
1092884	WashStation c/w push tap (pumped to drain)
1092885	10L HeatStation & Cabinet

Tank Dimensions

MODEL	HEIGHT	DEPTH	WIDTH
	mm	mm	mm
WashStation	1200	510	570
HeatStation	1095	580	350



Heated Unit

- 1 Mains water supply hose
- 2 Pressure safety valve
- 3 Thermostatic valve (adjustable)
- 4 Outlet supply to wash station
- 5 10L water heater

System Connections

Connection	Size
Inlet	1/2"
Overflow	3/4"
Drain Off	1"

	HeatStation Specifications						
Power Supply	230 volt						
Protection Required	16 Amp 30 MA RCD device						
Mains Power Cable	2m x 1mm ² 3 core						
Tap	-						
Water Heater Specs	Atlantic 10L 230V 2000W 50hZ IP24 self contained CE (c/w 6bar PRV valve)						
Temperature Settings (Thermostat)	MIN	1	2	3	4	5	MAX
	27°	30°	42°	50°	57°	65°	70°



Scan to see
WashStation
in action